

PROTO



LAUE-COS

Single Crystal Orientation Systems

# LAUE-COS

## unique features and options

Utilizing the Laue technique and a 150 mm x 100 mm back reflection camera, single crystals can be oriented in a few minutes. Designed for research labs and production environments. Manual and motorized options for X,Y stages. Manual and motorized goniometer options for chi, psi and phi rotation. Optional adapters for saw cutting, for easy transfer of single crystals from the Laue system to a saw.

### 2<sup>ND</sup> GENERATION BACK REFLECTION CAMERA

Low noise, high dynamic range cooled sensor technology for sharp Laue images.



### X-RAY TUBE

Our Tungsten x-ray tube is produced in-house to provide you with the best quality, performance, warranty and support.

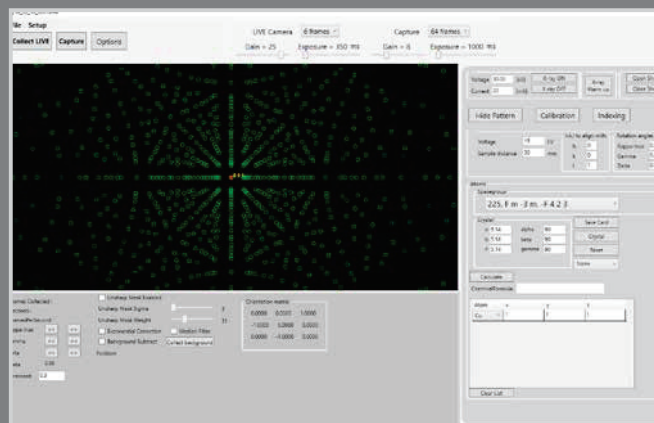
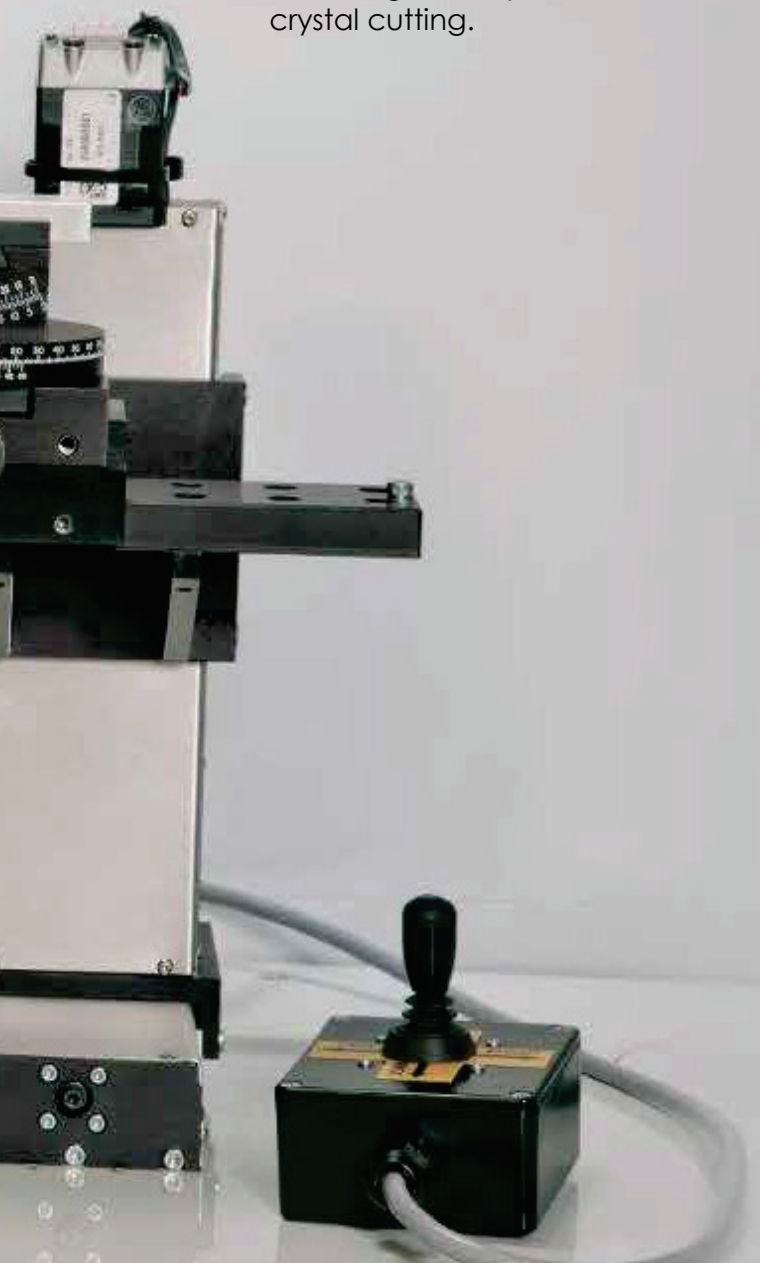






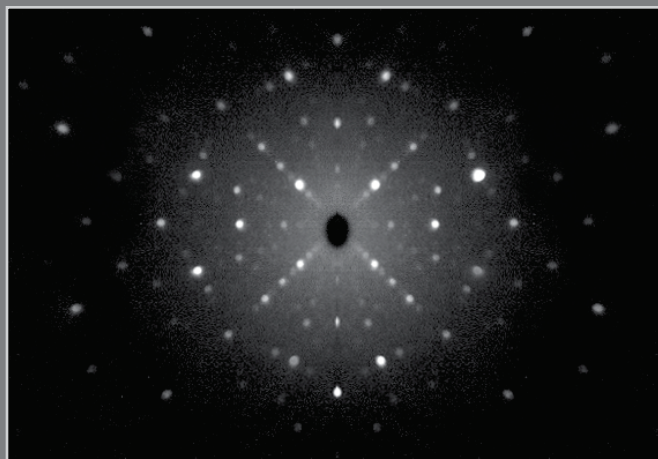
### 3-AXIS GONIOMETER

Manual goniometer for mounting of samples for crystal cutting.



### XRDWIN 2.0 LAUE SOFTWARE

Our XRDWIN 2.0 Laue software is designed for both operating our single crystal Laue orientation systems and data analysis of Laue patterns. Standard features include a comprehensive set of tools for analyzing patterns, indexing and reorienting crystals.



### CUSTOMIZATION

We understand that project requirements often require custom system specifications. Our team can customize your Laue system with various features and accessories to meet all your project needs.

#### AVAILABLE OPTIONS:

- Side-reflection, back-reflection and transmission geometries
- Automated 3-axis goniometers
- Manual or automated X, Y, or Z axis (100 mm) for sample positioning

SPEED ACCURACY UNSURPASSED PERFORMANCE SPEED ACCURACY UNSURPASSED PERFORMANCE  
 CCURACY UNSURPASSED PERFORMANCE SPEED ACCURACY UNSURPASSED PERFORMANCE SPEED  
 ACY UNSURPASSED PERFORMANCE SPEED ACCURACY UNSURPASSED PERFORMANCE SPEED ACCU  
 UNSURPASSED PERFORMANCE SPEED ACCURACY UNSURPASSED PERFORMANCE SPEED ACCURACY  
 ASSSED PERFORMANCE SPEED ACCURACY UNSURPASSED PERFORMANCE SPEED ACCURACY SPEED  
 Y UNSURPASSED PERFORMANCE SPEED ACCURACY UNSURPASSED PERFORMANCE SPEED ACCURA  
 URPASSED PERFORMANCE SPEED ACCURACY UNSURPASSED PERFORMANCE SPEED ACCURACY UN  
 ASSSED PERFORMANCE SPEED ACCURACY UNSURPASSED PERFORMANCE SPEED ACCURACY UNSU

# MAIN OFFICES

## USA

Proto Manufacturing Inc.  
 12350 Universal Drive  
 Taylor, Michigan  
 48180-4070  
 Tel 1-734-946-0974  
 info@protoxrd.com

## CANADA

Proto Manufacturing Ltd.  
 2175 Solar Crescent  
 Oldcastle, Ontario  
 NOR 1L0  
 Tel 1-519-737-6330  
 protocanada@protoxrd.com

## JAPAN

Proto Manufacturing K.K.  
 2-9-15 Sakae  
 Funabashi, Chiba  
 273-0018  
 Tel +81 [0] 47-402-2703  
 info@protoxrd.jp

# SALES & SERVICE CENTERS

## CHINA

EPCO Test Tech LTD  
 B2301 Tomson Center  
 188 Zhangyang Rd.  
 Pudong, Shanghai, 200120  
 Tel +86 21 38870960  
 sales@epco.com.cn

## INDIA

Elico Marketing PVT. LTD  
 57, Phase-V, Near Telephone Exchange  
 KPHB, Kukatpally, Hyderabad  
 500 072  
 Tel +91 40 2315 3322, 2315 3388  
 info@elicomarketing.com

## EUROPE

METLAB  
 al. Jaworowa 42/2  
 Wroclaw, Poland  
 53-123  
 Tel +48 (885) 200 993  
 protoeurope@protoxrd.com

Dimensions (L x W x H)	1000 mm x 660 mm x 1900 mm, 39 x 26 x 75 in
Power Requirements	200-240V, 30 Amp, 50/60Hz, Single Phase
X-Ray Tube	Tungsten (W)
X-Ray Power Supply	1200 W (40 kV / 30 mA)
Geometry	back-reflection, standard focus distance of 30 mm
X-ray Camera	back-reflection, 150 x 100 mm cooled sensor technology
Sample Positioning	manual or automated X, Y axis (100 mm), Z axis manual (100 mm)
Goniometers	manual or automated 3-axis
X-ray Beam Apertures	0.2, 0.5, 0.8, 1.0, 1.2, 1.6, 2.0 mm
Cabinet Features	independent warning light beacons for "x-ray on" and "shutter open", emergency stop with lockout key, enclosure light, fully interlocked, clear view windows, hand-held motion control pendant
Computer	desktop computer included
Software	PROTO XRDWIN 2.0 Laue
System Compliance	ANSI N43.2, CE

Proto Manufacturing engages in continuous research and development, therefore specifications in this publication are subject to change. Please call for details.  
 Various items and methods in this brochure are covered by patents or patents pending.

A WORLD OF SOLUTIONS

www.protoxrd.com  
 1-800-965-8378